

## POLYETHYLENE (PE) FEATURES

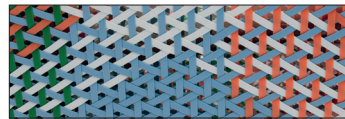
Varaschin spa uses Polyethylene, a high-density thermoplastic resin (HDPE) with the following technical features:

- Declared "not dangerous" according to ECC 88/379 standard
  - Resistant to light and ideal for outdoor environments: UV tests UV tests according to the technical standard ISO 4892-3: 2006 and ISO 105-A02 with particular reference to the grey scale determination.
  - Excellent temperature surge resistance, resistant to temperatures between -30 and +65 degrees.
- Production with IMO certification available (on request and at extra charge) IMO A652 (16) 8.2 IMO A652 (16) 8.3.

## MAAT



Urban Grey



Color

## POLYETHYLENE (PE) MAINTENANCE AND CLEANING RECOMMENDATIONS



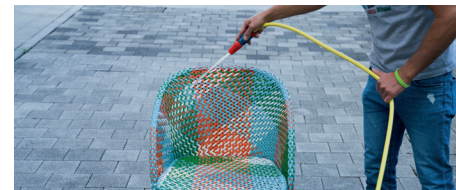
FASE - PHASE 1

- Spray Cleaner (Chanteclair or similar) on the surface and let cleaning solution sit 1 minute



FASE - PHASE 2

- Brush the surface repeatedly in a circular motion using a soft bristle brush



FASE - PHASE 3

- Flush with plenty of water, as it is very important to avoid residue drying on surface. Wipe with a dry cloth