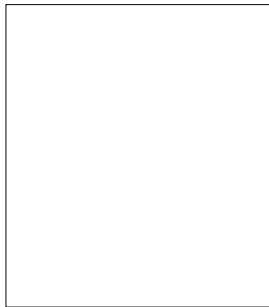
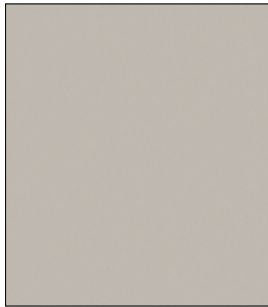


GAMBE - LEGS



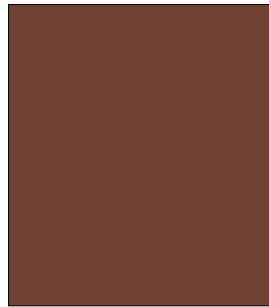
BIANCO - WHITE
(RAL 9003)



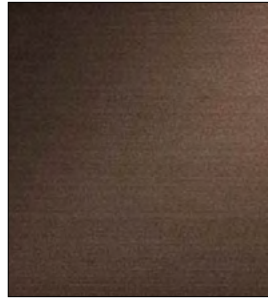
GRIGIO SETA - SILK GREY
(RAL 7044)



DENIM - DENIM



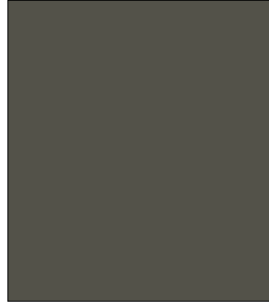
RUGGINE - RUST
(RAL 8002)



BRONZO METAL - METAL BRONZE



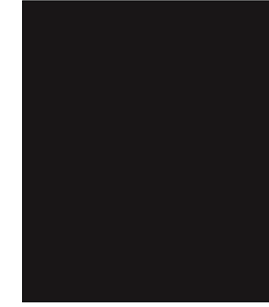
VERDE - GREEN
(RAL 6012)



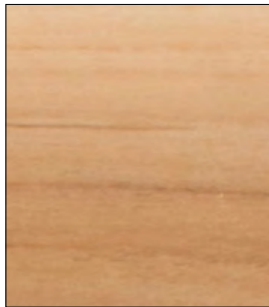
GRIGIO - GREY
(RAL 7022)



MOKA - DARK BROWN
(RAL 8022)



NERO - BLACK (RAL 9005)

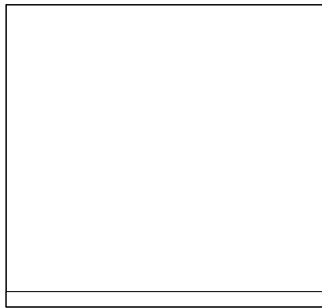


TEAK

TOP - TOP



HPL ANTRACITE BORDO NERO
HPL ANTRACITE / BLACK EDGE



HPL BIANCO BORDO BIANCO
HPL WHITE / WHITE EDGE



HPL GRIGIO PERLA BORDO PERLA
HPL PERLA GREY / PERLA EDGE



HPL CEMENTO BORDO MARRONE
HPL CEMENT / BROWN EDGE



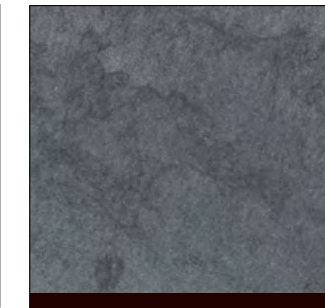
HPL GRAFITE BORDO MARRONE
HPL GRAPHITE / BROWN EDGE



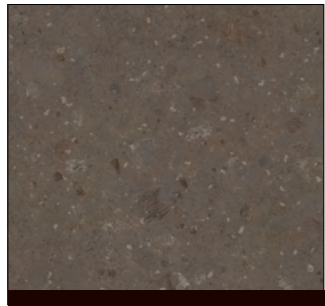
HPL BEDONIA BORDO MARRONE
HPL BEDONIA / BROWN EDGE



HPL CORTEN BORDO MARRONE
HPL CORTEN / BROWN EDGE



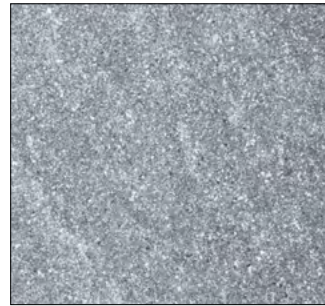
HPL ARDESIA BORDO NERO
HPL ARDESIA / BLACK EDGE



HPL LAVAGNA BORDO MARRONE
HPL LAVAGNA / BROWN EDGE



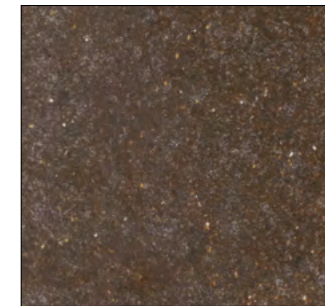
CERAMICA BIANCO CALCE
CERAMIC LIME WHITE



CERAMICA GRANITO GRIGIO
CERAMIC GREY GRANITE



CERAMICA VERDERME
CERAMIC COPPER GREEN



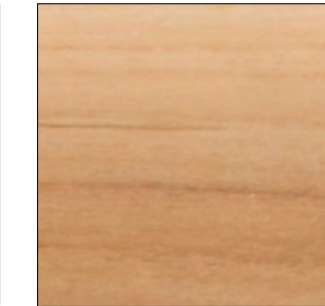
CERAMICA BRONZITE
CERAMIC BRONZITE



CERAMICA PORFIDO GRIGIO
CERAMIC GREY PORPHYRY



CERAMICA DARK STONE
CERAMIC DARK STONE



TEAK (solo tavoli fissi rettangolari)