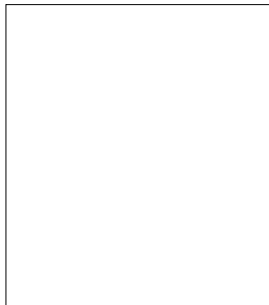


GAMBE - LEGS



BIANCO - WHITE
(RAL 9003)



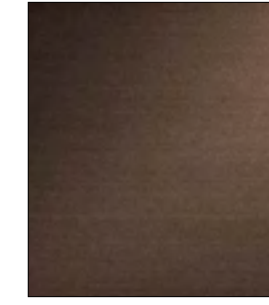
GRIGIO SETA - SILK GREY
(RAL 7044)



DENIM - DENIM



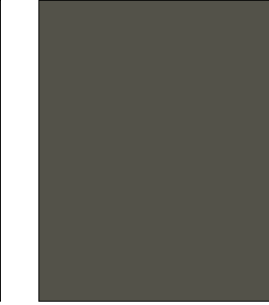
RUGGINE - RUST
(RAL 8002)



BRONZO METAL - METAL BRONZE



VERDE - GREEN
(RAL 6012)



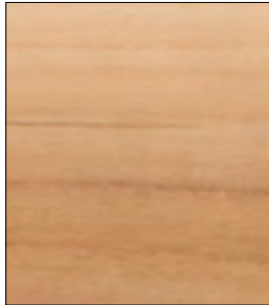
GRIGIO - GREY
(RAL 7022)



MOKA - DARK BROWN
(RAL 8022)



NERO - BLACK (RAL 9005)



TEAK

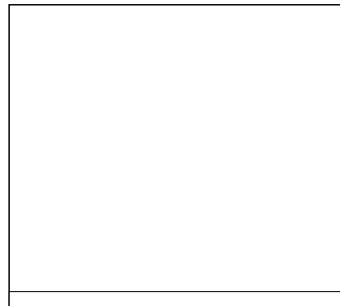
TOP - TOP



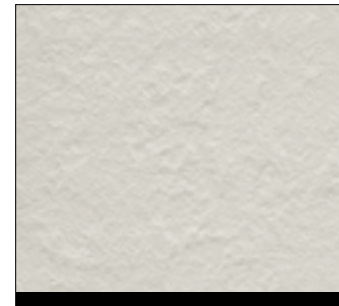
HPL BIANCO BORDO NERO
HPL WHITE / BLACK EDGE



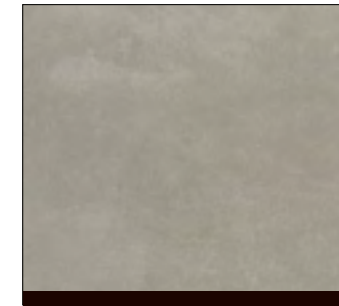
HPL ANTRACITE BORDO NERO
HPL ANTRACITE / BLACK EDGE



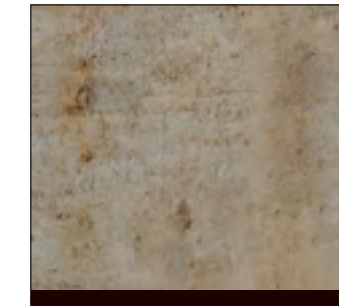
HPL BIANCO BORDO BIANCO
HPL WHITE / WHITE EDGE



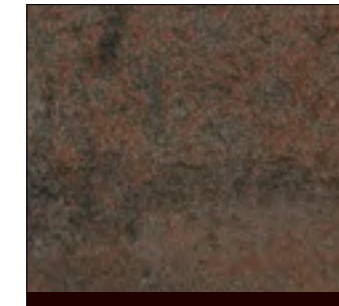
HPL GRIGIO SETA BORDO NERO
HPL SILK GREY / BLACK EDGE



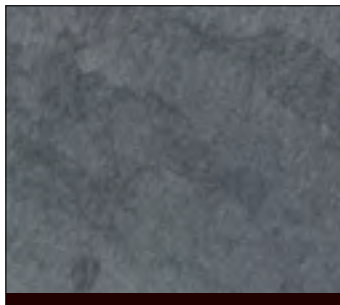
HPL CEMENTO BORDO MARRONE
HPL CEMENT / BROWN EDGE



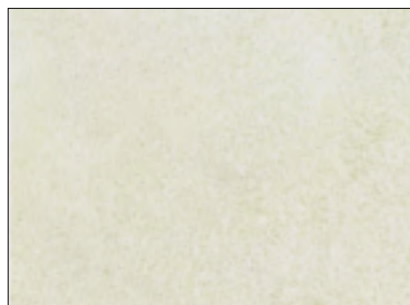
HPL BEDONIA BORDO MARRONE
HPL BEDONIA / BROWN EDGE



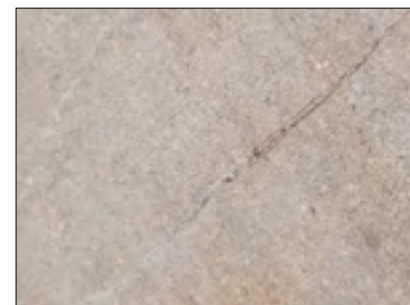
HPL CORTEN BORDO MARRONE
HPL CORTEN / BROWN EDGE



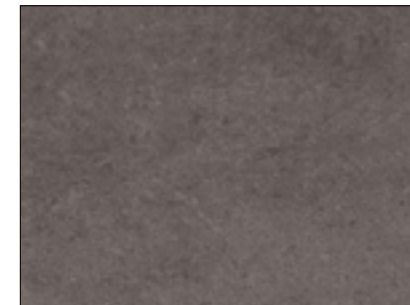
HPL ARDESIA BORDO NERO
HPL ARDESIA / BLACK EDGE



CERAMICA BOCCIARDATA BIANCO CALCE
BUSH-HAMMERED CERAMIC LIME WHITE



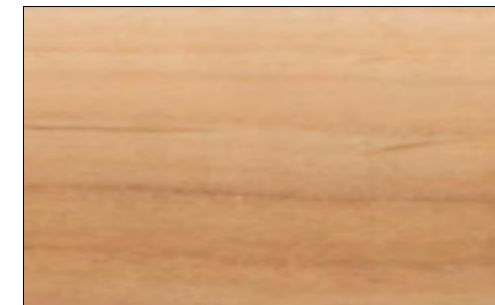
CERAMICA BOCCIARDATA PORFIDO GRIGIO
BUSH-HAMMERED CERAMIC GREY PORPHYRY



CERAMICA BOCCIARDATA DARK STONE
BUSH-HAMMERED CERAMIC DARK STONE



CERAMICA BOCCIARDATA GRANITO GRIGIO
BUSH-HAMMERED CERAMIC GREY GRANITE



TEAK (solo tavoli fissi rettangolari)